

CSN1 DVR Server Product Information



CSN1 DVR Servers covered with a 3 year limited warranty!

CSN1 DVR Servers feature GV-Series PC based technology. Providing multi-channel video surveillance system that utilizes the most advanced digital video compression technologies to bring you the highest picture quality and video performance. The GV-Series product range starts from our entry level GV-100 to the flagship GV-800.

Up to 16 cameras can be connected and viewed live on a local monitor screen or thru TCP/IP network. Video can be recorded based on specifiable schedules or motion detection. You can store video clips on the server hard drive or any optical storage device by using the CSN1 GV Backup System.



NOW live monitoring using PDA device.

The latest GeoVision v5.3 now includes a new wireless application called G-View, which extends the GV-System's networking capability to the next level. G-View enables authorized users to view video from any networked GV-System in real-time on any Windows CE-based PDA. Users can switch to view different camera, perform PTZ (pan, tilt, zoom) control, or taking snapshots from the live videos.



CSN1 DVR Server Interface

Supports up to 16 'LIVE' camera views! Multiple Systems can be linked via Center Console for up to 400 additional cameras!

Major Features

- 640 X 480 recording and display resolution
- Mpeg 4 / Wavelet compression technology
- Motion detection, around the clock, and pre-schedule recording mode
- Alarm to E-mail (Jpeg or text message)
- Embedded I/O devices control - Embedded PTZ control panel
- Build-in web server
- Digital watermark authentication
- Hardware watchdog features
- Multi level passwords protection
- Full screen display
- Support dynamic IP address
- Video lost detection
- Support dual screen display

Smart Recording Technology

CSN1 DVR Servers utilize Geovision's Smart Recording Technology. The system will automatically distribute higher frame rates to the active camera. This allows a more efficient way to utilize CSN1 DVR resources.

Recording Mode

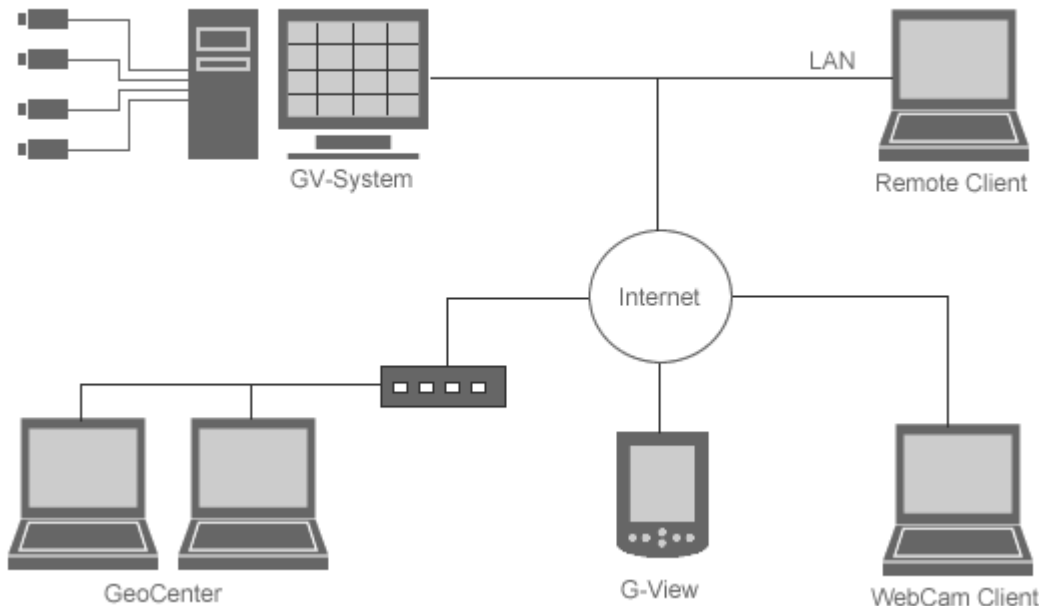
- Motion detection recording
- Around the clock recording
- Pre-schedule recording
- Post alarm recording

Camera Configuration

- Independent video brightness and contrast control
- Selectable motion detection sensitivity and masking area for each camera.
- Independent recording quality and frame rate adjustment.

Remote Application Software

- Remote View
- WebCam
- Geo Center
- i-Mode
- IP Multicast
- Remote Playback system
- G-View for Win CE PDA



CSN1 DVR product is based on Window OS!

Telephone, pager and email alerts

The CSN1 DVR Servers are capable of connecting up to 72 I/O devices when correspond with the optional GV-IO modules. These modules can be connected to motion sensors, smoke detectors, or PTZ cameras. When a detector or alarm is triggered, the system will quickly send alerts to your mobile phone, pager or email, allowing you to act as quickly as possible to minimize property lost.



CSN1 DVR Server Product Information



Remote Playback and Monitoring Interface

The CSN1 DVR Server is a true network surveillance system. We offer a wide range of solutions for remote playback and monitoring. Captured images or videos can be easily distributed to any remote locations thru LAN/WAN environment or Internet connection.

- Remote Viewer
- Multicast System
- WebCam Viewer
- Geo Center
- Remote Playback System
- HandHeld PDA Viewer

Built-in motion detection

CSN1 DVR Server motion detection feature can be configured individually for each camera. Sensitivity and masking area can be adjusted separately according to the physical surroundings. This improves reliability and accuracy of detection.

SURVEILLANCE WEB

www.SurveillanceWeb.com

With the addition of the optional real time display card, you can now display live video from 16 cameras on a monitor screen at a 30 fps NTSC or 25 fps PAL quality. The TV-Out connector allows you to display real time video on to a TV display.

Audio Recording

With the addition of audio recording, you are now able to record and playback both audio and video at the same time, which gives you a more precise picture of the captured event.

Pre-Recording

GeoVision completes the pre/post recording function by adding pre-recording mode to the new v5.3 software. Pre-recording allows users to capture additional image frames prior to the motion detection recording.

Two-Way Audio Over IP Network

Remote-monitoring may provide a simple way of guarding sensitive areas over the Internet, but what if you are miles away while witness your property being burglarized? You need a system that gives more control over your surveillance area and enables you to take real time action. With GeoVision's two-way audio feature, you have the ability to monitor and communicate with local sites. If someone is caught surpassing a restricted area, you will be able to speak to the trespasser and suggest him or her to leave immediately. All this can be done over the Internet by simply using IE browser without the need of additional software. To enable two-way audio function, your GVSystem must be equipped with GeoVision's audio extension card and installed with necessary audio input source.

Embedded PTZ palette (PTZ- Pan-Tilt-Zoom)

PTZ-capable cameras can be controlled directly from CSN1 DVR surveillance system or any remote view workstation. Intuitive control of movement is available via the embedded control panel on the video display window.

Digital Watermark

The Digital watermark will check whether the image is originally captured from the GV system or not. If the captured image has been alter or modified in any way, then the software will indicate that the image has been damaged and it will no longer be used as legitimate evidence.

Digital Clients

We have worked with Police Stations, Public and Private Schools, and private business. We utilize both IP and DVR solutions to meet a variety of video requirements.



CSN1's PC based design approach provides our customer the freedom in creating the most flexible and cost-effective solution.

CSN1 DVR Server Product Information



WEB Interface









Network Bandwidth Control For RPB

In a networked digital surveillance environment, live video streams, and large recorded files are continually being transmitted over the network. Therefore, controlling your network usage to ensure that each application maintains proper bandwidth becomes important. In V5.3 you can adjust the network bandwidth for your RPB and WebCam RPB applications. So the next time you download a video files over the Internet or LAN, it will not hog your entire network bandwidth completely.

CSN1 DVR Servers...

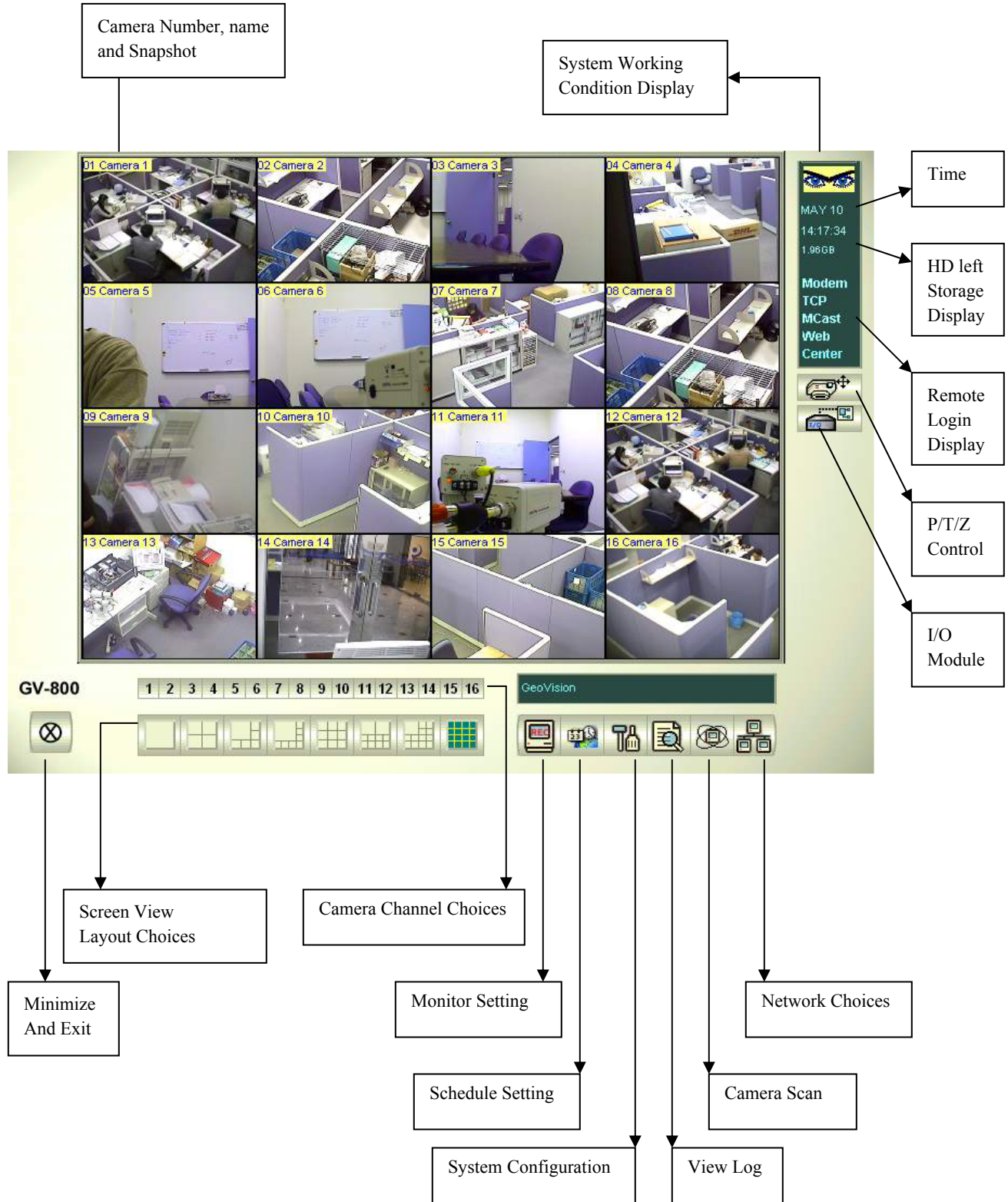
*Ensuring safety for
business, schools
and governments!*

CSN1 DVR approved Cameras are Guaranteed to Work!

<p><u>Bullet-Style...</u></p>  <p>Waterproof for outdoor or indoor use. Available in B&W and Color w/ a white or black finish.</p>	<p><u>Commercial...</u></p>  <p>Enormously flexible, numerous lens sizes available. Housing required for outdoor use.</p>
<p><u>Covert...</u></p>  <p>Floodlights, smoke detectors, clocks, and more. Indoor or outdoor use.</p>	<p><u>Night Vision...</u></p>  <p>Infra-red lights enhance night viewing, work in daylight too. Indoor or outdoor use.</p>
<p><u>Pan Tilt Zoom...</u></p>  <p>Control the up/down and left/right movement of these cameras. Powerful zoom lenses let you see hundreds of feet away.</p>	<p><u>Tamper-Resistant...</u></p>  <p>Bat, bullet, and blast resistant - the Silent Witness line of cameras can withstand almost anything. Indoor or outdoor use.</p>
<p><u>Wireless...</u></p>  <p>Need mobility with your surveillance system? Then you need to go wireless. These wireless kits offer mobility with the same high quality imaging.</p>	<p><u>IP-Addressable Network Camera</u></p>  <p>NetCam is a complete standalone internet imaging solution... simply plug NetCam into your network or modem and it automatically serves high quality live images from its built-in web server. All that's needed to view and configure NetCam is a web browser!</p> <p>Note: This camera does not require the CSN1 DVR Server.</p>

Other models available!

CSN1 DVR Server Interface – Display up to 16 cameras at a time!



DVR Frequently Asked Questions

- **I am using the CSN1 DVR server on an intranet. I wish to be able to view this both internally and externally. Is this possible?**
 - Yes, however, you must have a static real world IP assigned to the DRV server in order to see the server internally and externally.
- **I have ordered the CSN1 DVR server and only ordered a 120gig hard drive. What happens when the hard drive is full?**
 - If the hard drive fills to 500 megabytes remaining, the DVR server will begin overwriting old files to keep from running out of disk space. Even with this feature being automatic, we suggest that the server be “cleaned” of old files periodically.
- **After I purchased version x.xx of the CSN1 DVR server, a new version was released. Do I get charged for the upgrade?**
 - No. The updates of the software are offered free of charge, however, if you are outside your initial 30 days, we will still come out and do the upgrade at our standard labor rates, which will include training as well.
- **I purchased the 4 port version of the DVR server. I now see that with the way my business is growing and the ease of mind I get with the system I would like to upgrade to a 16 port version. Is this possible?**
 - Depending on the time frame from the original purchase date, we will exchange, for an additional cost, the DVR card for the card that fits your business needs. (See your sales rep for details)
- **I see the requirements for the DVR system are not to high end. Could I use my home pc as the server?**
 - Even though the system is not set on “high end requirements” we suggest a dedicated server engineered by our team to insure that you get the best and most desirable usage out of the DVR Server. All devices installed in the CSN1 DVR Server are tested by our staff to perform above and beyond a normal home pc. Due to the testing our staff does on the DVR system before it leaves our offices, we find it difficult to service a product that we did not fully build and test in-house first.
- **Is it possible to use more than one hard drive in the DVR System?**
 - Absolutely. In fact, when we engineer the server to fit your needs, we suggest multiple hard drives to insure the proper storage needs are met.
- **I have multiple CSN1 DVR Servers, is it possible to view a mix of cameras from them in one web interface?**
 - Absolutely. One of the key features of the newest release of the DVR software is you can view cameras from different DVR servers you have. As long as it is connected to a network connection, it is viewable.